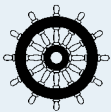


# Navmaster ECDIS 800

Navmaster ECDIS is an established Electronic Chart Display and Information System developed by PC Maritime which incorporates feedback from many navigators into its design.

Type approved to the revised performance standards (MSC232 (82)), Navmaster ECDIS 800 meets not only the latest ECDIS specification, but also the requirements of navigators who use it on a daily basis. It is logical to use within a familiar MS Windows environment and the design ensures that additional features do not distract the user from core navigation tasks.



## Key Benefits:

- Excellent route planning and detailed passage plan documentation
- Remote Diagnostics feature for rapid and low-cost support
- Easy chart installation and updating
- Integration with official worldwide tidal data
- Modular hardware design for easy installation in newbuilds and existing vessels – from VLCCs to workboats
- ECDIS training modules with on-line assessment coming soon

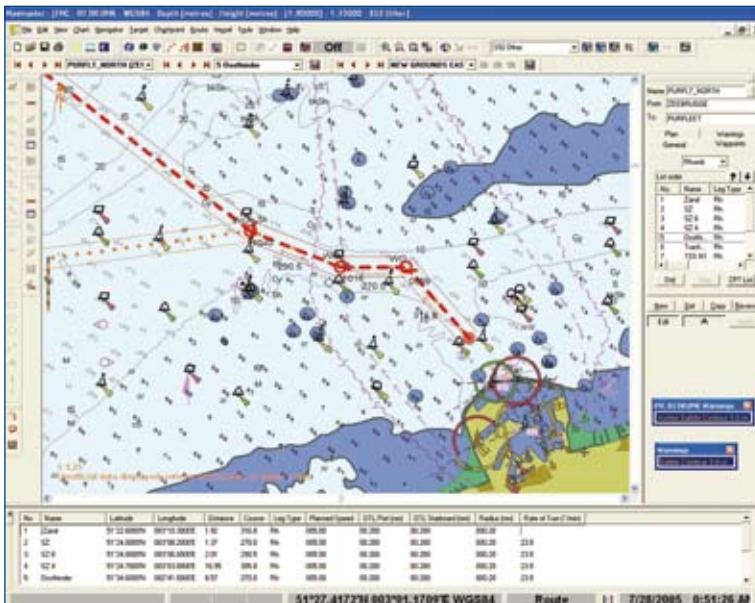
## Real-time route monitoring

Navmaster ECDIS automatically displays primary and secondary ship position and provides the navigator with vital voyage information including:

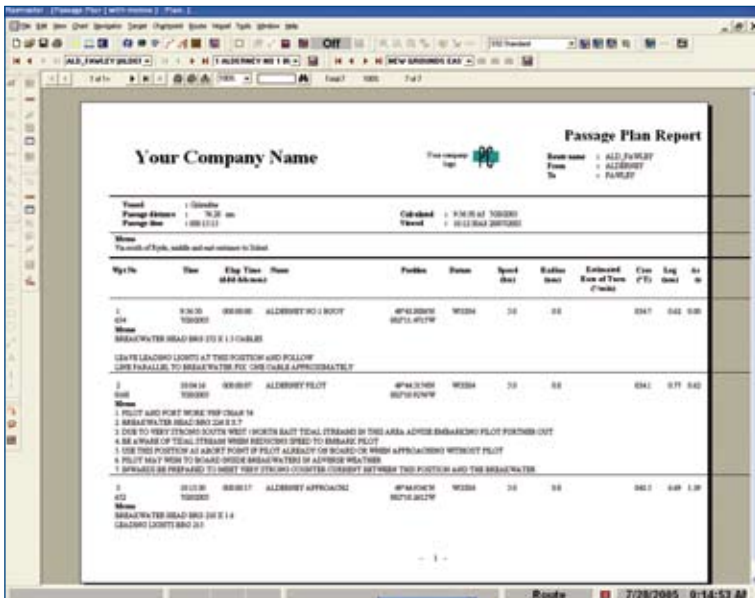
- ARPA & AIS target information
- Information from interfaced sensors
- Heading indicator
- Scaled ship outline to aid berthing
- Warnings and alarms such as safety contours, off-track, wheelover, critical point, chart status, interfaced sensor alarms, system integrity etc
- Automatic logbook, with manual entry option
- TotalTide integration for worldwide tidal data



Vessel underway with heading marker set to show predicted position at user-defined intervals.



Route planned from Zeebrugge with relevant data in tabular form listing waypoints by number and name. An alternate route is also visible on the chart.



Navmaster ECDIS passage plan report incorporates pilotage and navigation instructions and can be printed for hard-copy storage or exported to another application.

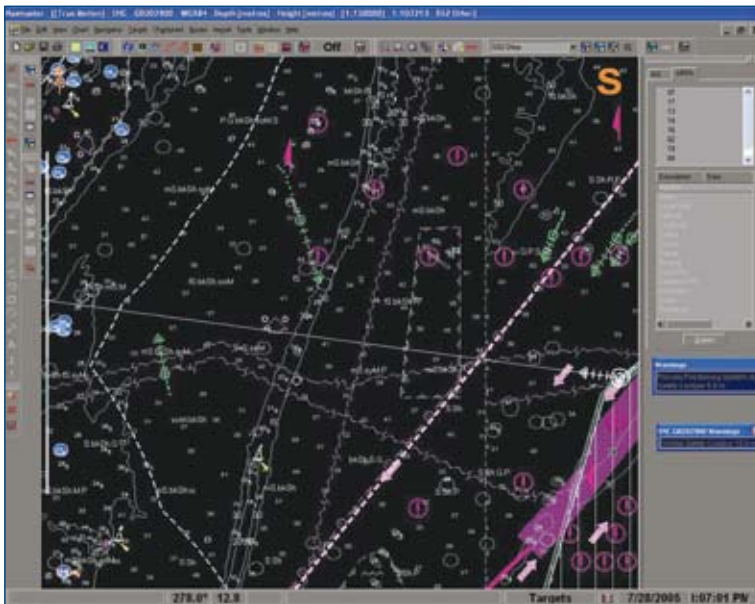
## Berth-to-berth route planning

The organisation and structure of Navmaster ECDIS route planning is unique amongst ECDIS systems and superior to the normal standard.

The resulting passage plan documentation can be used to conform to the ISM Code and company quality requirements.

Navmaster's passage planning has been the standard for the Shell International fleet since 1997.

- Separate databases for waypoints and routes, to make planning informative and much more efficient
- Notes can be stored against each waypoint, and will be transferred into any routes which utilise that waypoint
- The detailed passage plan documentation incorporates the navigator's instructions and notes
- The plan report can be customised with a company logo and name
- Routes can be exported/shared with other vessels in the fleet
- Passage plans can be exported and emailed to head offices and third parties



Night view of own ship crossing southbound Channel traffic separation scheme, with other vessels in the vicinity.

## ARPA & AIS information and overlays

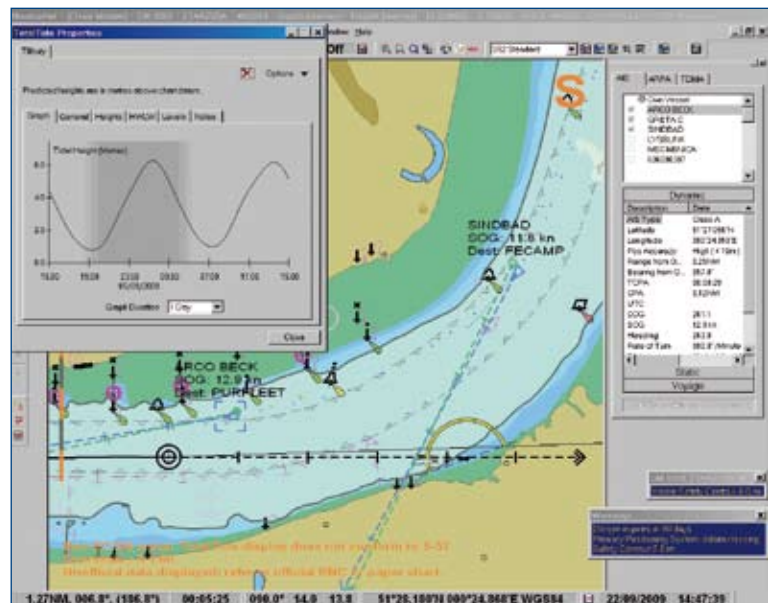
ARPA targets are continuously monitored by Navmaster ECDIS with additional data displayed in the side panel.

- Unlimited ARPA targets tracked
- Automatic storage of target data (with optional VDR module)
- Frequently used commands quickly accessible from toolbar
- Go-To-Target button for rapid view if target is not on the current chart
- Option for radar video overlay

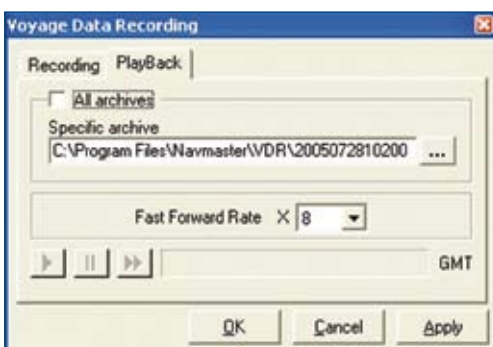
## Interface with AIS

When combined with ARPA, AIS provides the navigator with a comprehensive presentation of the traffic situation.

- Unlimited target display
- Information filtered between Static, Dynamic and Voyage data
- Quick View button to display selected text labels for user-defined time period
- All targets accessible in side panel
- Targets displayed in latest IHO symbology
- Enables easy upload of own ship voyage information to AIS



Own ship steaming down the Thames with incoming vessel visible and other AIS targets listed in the side panel. Integrated TotalTide data is also displayed.



The VDR playback dialog illustrating how voyages can be replayed from captured data with Navmaster's VDR function.

## Voyage data recording and playback

A very useful addition to ECDIS for vessels not required to carry type approved VDR, this feature automatically captures all own and other vessel data without crew action, stores the data compressed and encrypted in archives and enables voyages to be reconstructed from the playback function.

It provides vital evidence in the event of incident or damage and has assisted customers in resolving insurance claims.

For the data to be replayed on another PC, an office-based Navmaster installation is required.

## Modular hardware

All components of the hardware have been type approved individually and as part of the Navmaster ECDIS. Modular components offer greater installation and maintenance flexibility and allow customers a degree of choice. The PC processor can be stored in under-counter housing with TFT display, keyboard and trackball at the conning position. Alternatively all components can be built into integrated bridge consoles. The display could be upgraded to a larger size for just the cost of the display or the PC components could be upgraded to accommodate future ECDIS developments.

In the event of faults, individual components can be isolated and removed/replaced, allowing the ECDIS to continue functioning with a substitute component until maintenance is complete.

## Aftercare and service

Our aim is to provide customers with first class support. Although support is not always considered at initial purchase, our experience is that the quality of post-sale support and maintenance is very important to customers and can significantly reduce running costs.

- Remote Diagnostics function in Navmaster for fast, efficient problem-solving – engineer visits are rarely necessary
- Knowledgeable PC Maritime staff available to give personal support, also when supply is via a third party
- Upgrade and Support contract provides unlimited technical support by phone or email and automatic issue of upgrades, to allow for expected changes in electronic chart delivery mechanisms over the next few years and for further regulatory changes as they occur
- Practical Type Training available onboard ship or at a shore-based location
- Navmaster ECDIS Type Training modules with on-line assessment coming soon



Intel Core2 Duo 3.0GHz, 2Gb RAM, 60 Gb solid-state hard drive. Certified to IEC60945. One Unit high (1.75") 19" rack-mount case with brackets. Measures 433 x 390 x 45mm excluding brackets. Weight 6.8 Kg.



24" LCD monitor with excellent brightness and contrast levels and direct dimming control. Certified to IEC60945, IEC61174. Brackets are available for desktop and panel mounting. Measures 630 x 467 x 137mm. Weight 15.7 Kg.

Other hardware components are available such as pedestal and console options. Please contact us for more details.

## Electronic charts

Navmaster ECDIS is compatible with ENC, CM-ENCs, ARCS, Seafarer and Jeppesen C-Map CM93/3 electronic charts.

## PC MARITIME

PC Maritime Ltd,  
Brunswick House, Brunswick Road,  
Plymouth PL4 0NP, UK.

Tel: +44 (0)1752 254205  
email: [commercial.sales@pcmaritime.co.uk](mailto:commercial.sales@pcmaritime.co.uk)

[www.pcmaritime.co.uk](http://www.pcmaritime.co.uk)



PC Maritime, a Charente Group company, has a record of firsts in marine software development and marketing. The Company has won four UK Government SMART Awards, one SPUR Award and the Seatrade Award for Safety at Sea.

PC Maritime thanks its customers Scotline, OSG(UK), Nico Middle East and Transocean for the photos on the front page.

INTELLIGENT NAVIGATION SOLUTIONS